

GUIDELINES FOR CPR AND ECC 2022



Dr. Reza HabibiSaravi
M.D., Ph.D.

Pre-Hospital Emergency Medical Services and
Disaster Management Center

Mazandaran University of Medical Sciences

IHCA



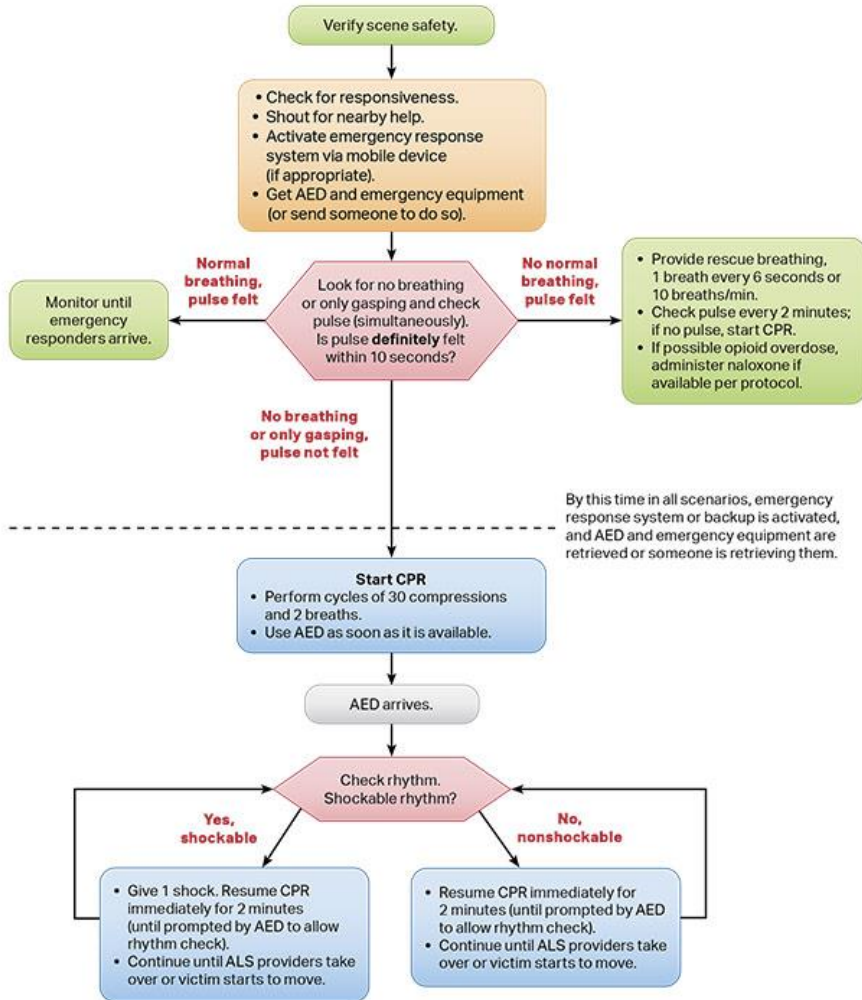
OHCA



ADULT BLS
for
Health Care Providers (HCPs)
for
Suspected or Confirmed Case of
COVID-19

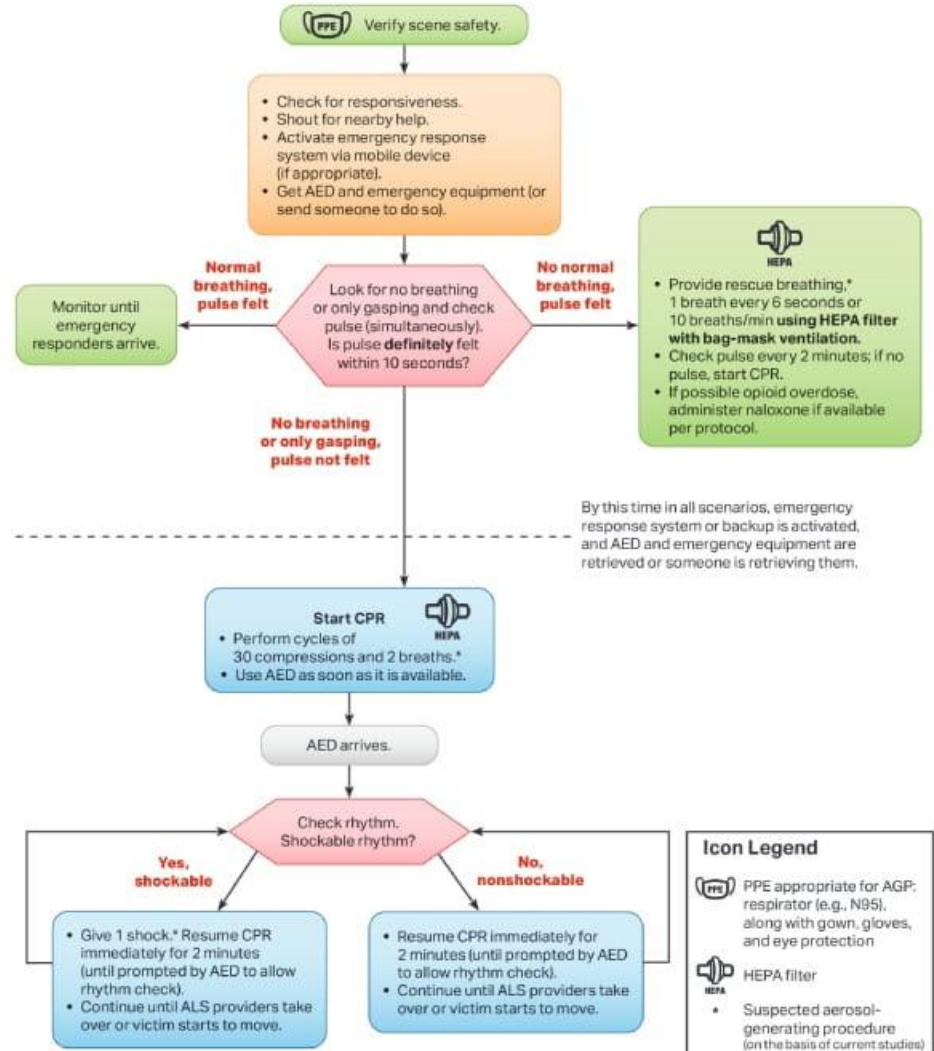
AHA 2022

Adult Basic Life Support Algorithm for Healthcare Providers



© 2020 American Heart Association

Adult Basic Life Support Algorithm for Healthcare Providers for Suspected or Confirmed COVID-19



Adult BLS for HCPs _ COVID19



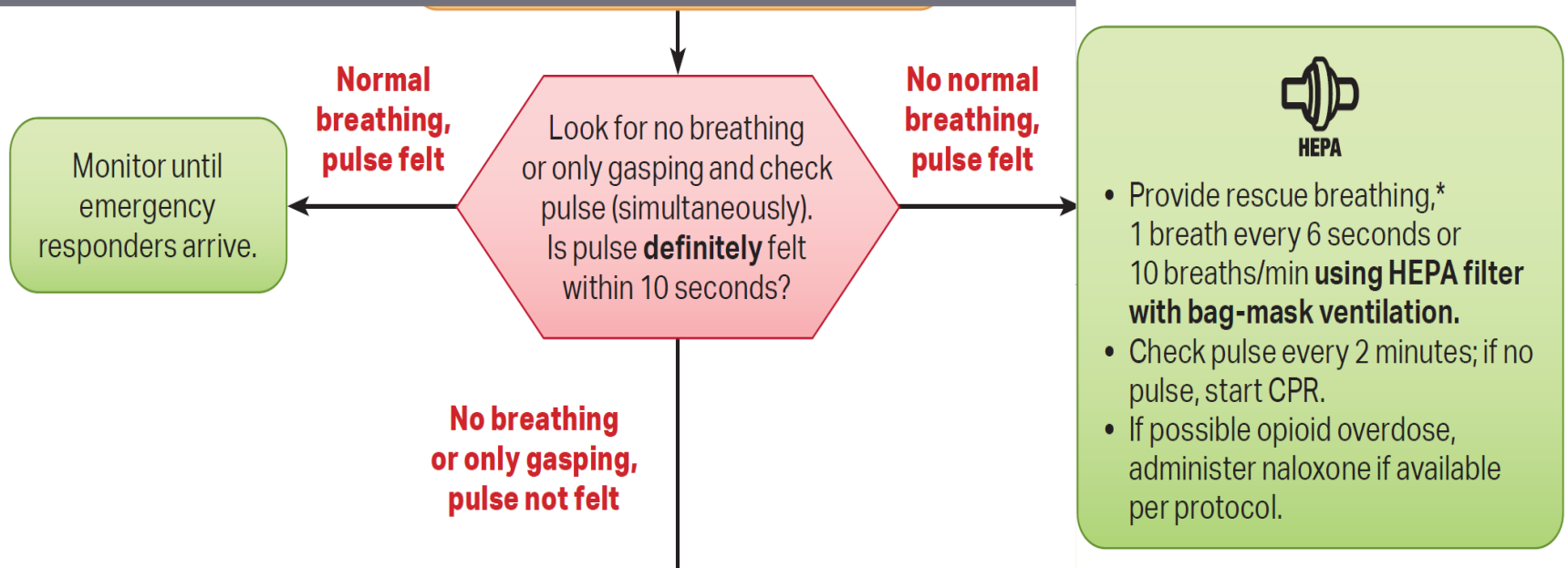
Verify scene safety.

- Check for responsiveness.
- Shout for nearby help.
- Activate emergency response system via mobile device (if appropriate).
- Get AED and emergency equipment (or send someone to do so).



PPE appropriate for AGP: respirator (e.g., N95), along with gown, gloves, and eye protection

Adult BLS for HCPs _ COVID19



Adult BLS for HCPs _ COVID19

**No breathing
or only gasping,
pulse not felt**

By this time in all scenarios, emergency response system or backup is activated, and AED and emergency equipment are retrieved or someone is retrieving them.

Start CPR



HEPA

- Perform cycles of 30 compressions and 2 breaths.*
- Use AED as soon as it is available.

AED arrives.

Check rhythm.
Shockable rhythm?

**Yes,
shockable**

**No,
nonshockable**

- Give 1 shock.* Resume CPR immediately for 2 minutes (until prompted by AED to allow rhythm check).
- Continue until ALS providers take over or victim starts to move.

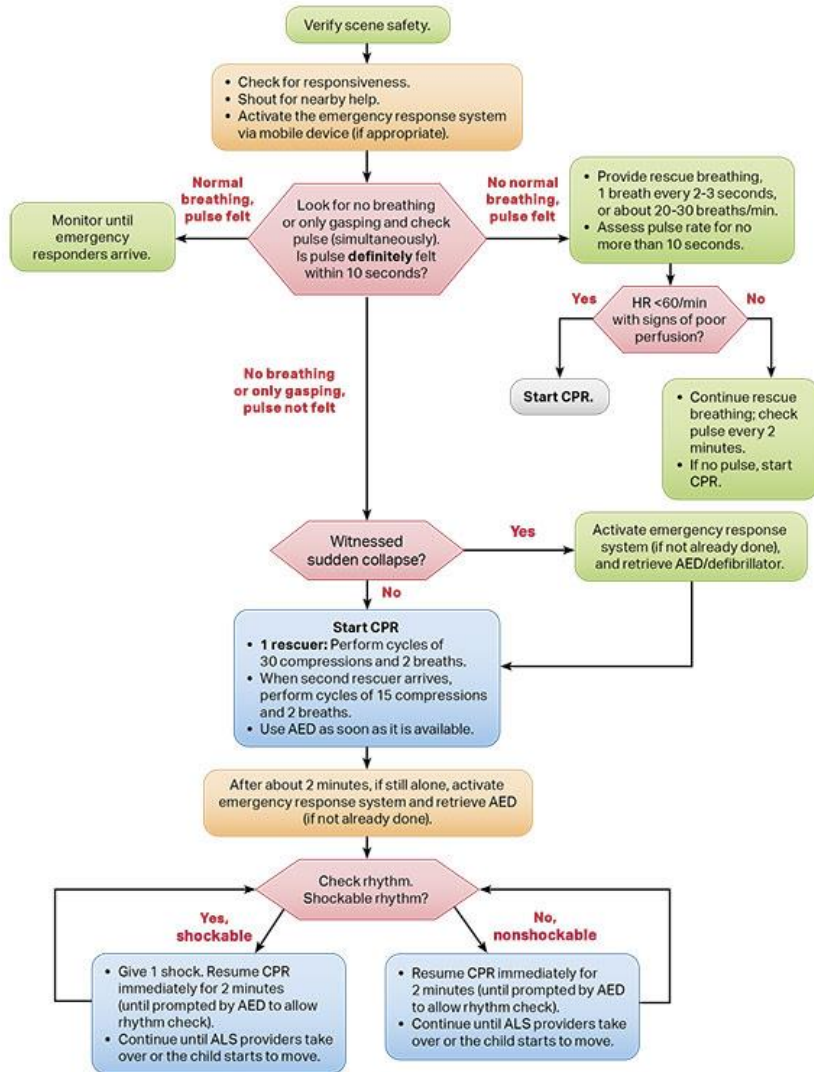
- Resume CPR immediately for 2 minutes (until prompted by AED to allow rhythm check).
- Continue until ALS providers take over or victim starts to move.

Pediatric BLS
for
Health Care Providers (HCPs)
for
Suspected or Confirmed Case of
COVID-19

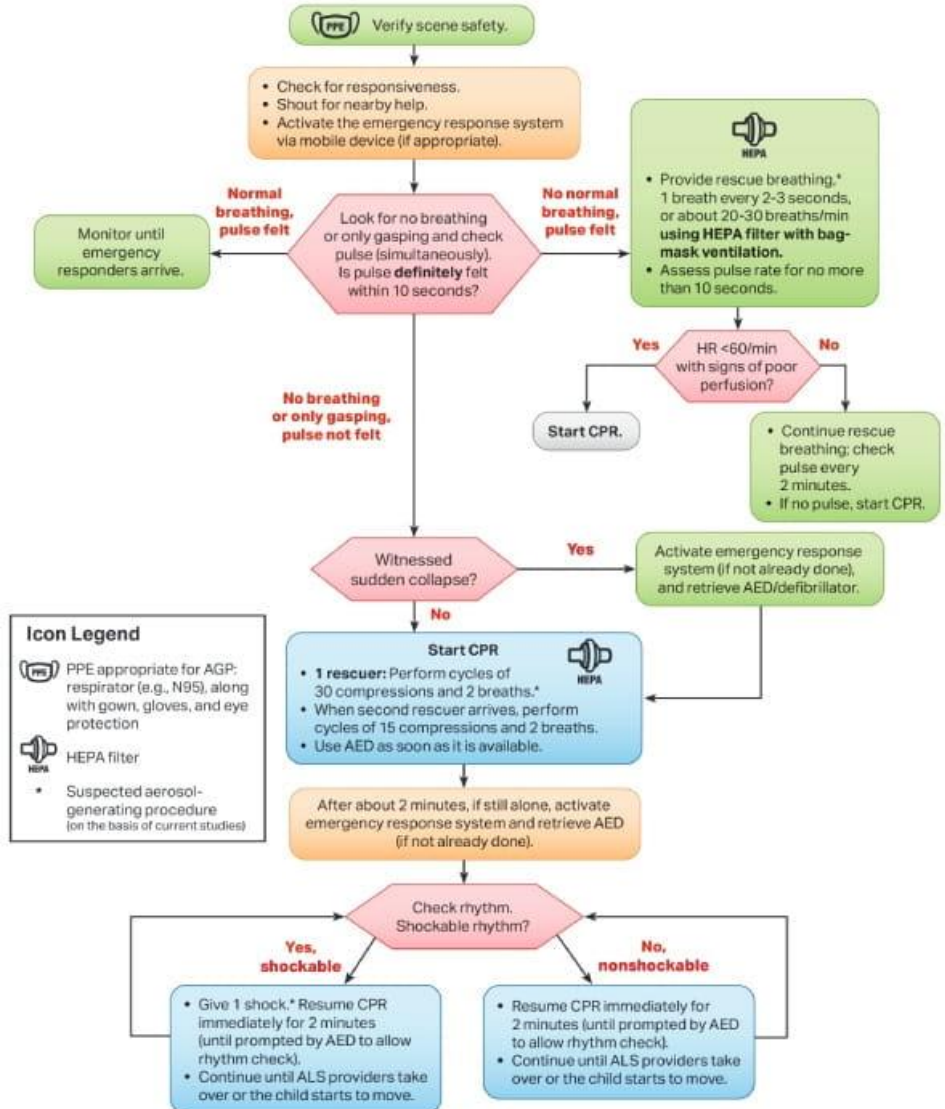
AHA 2022

1 Rescuer

Pediatric Basic Life Support Algorithm for Healthcare Providers—Single Rescuer



Pediatric Basic Life Support Algorithm for Healthcare Provider—Single Rescuer for Suspected or Confirmed COVID-19

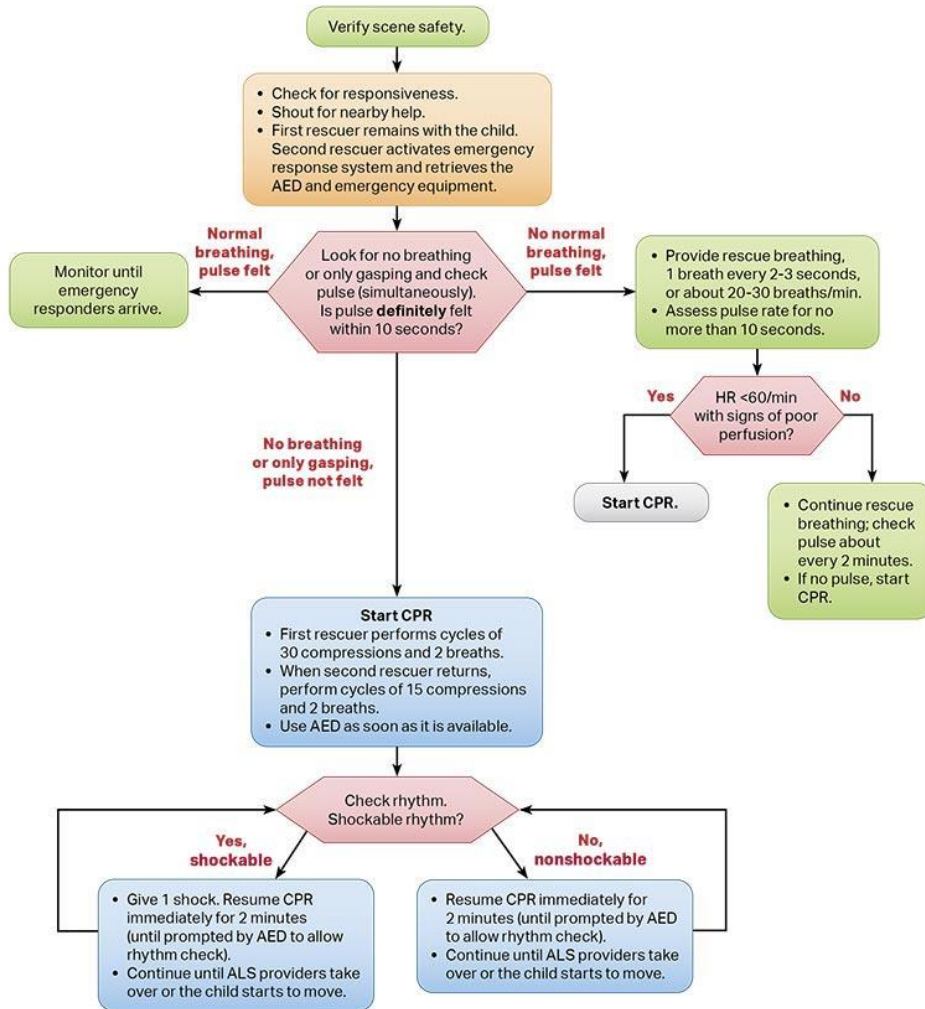


Icon Legend

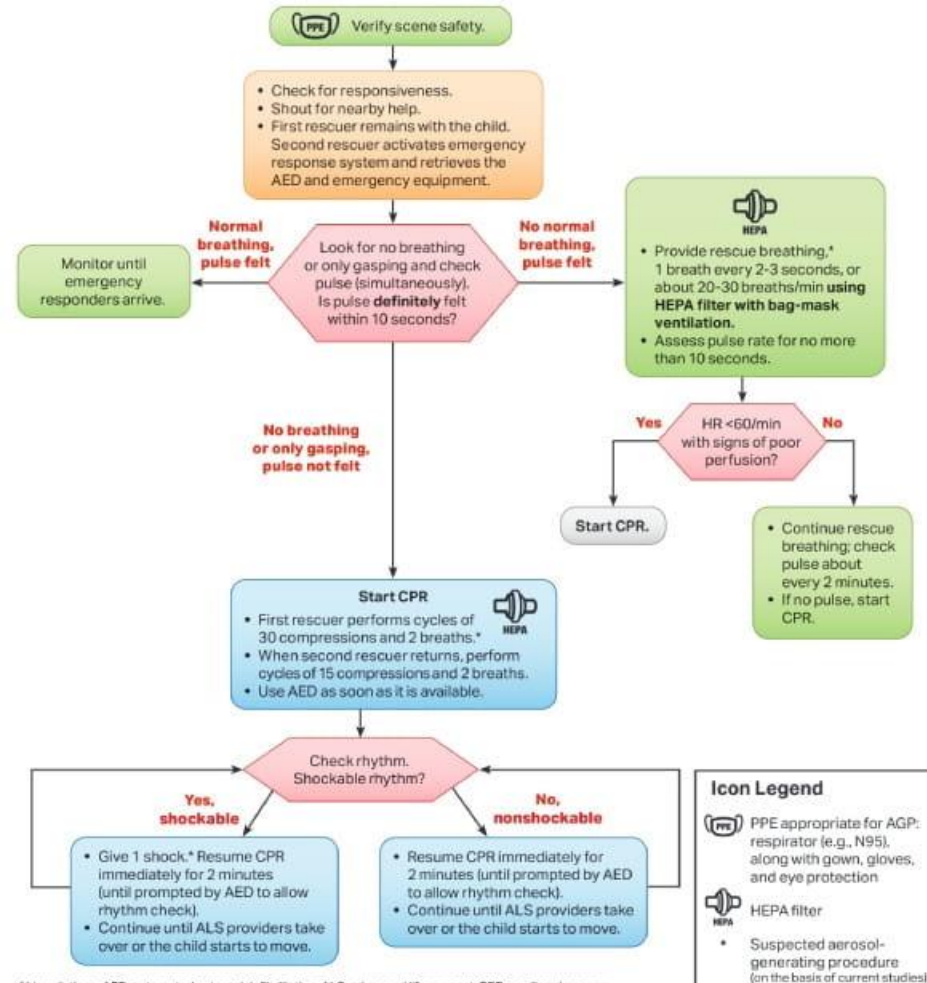
- PPE appropriate for AGP: respirator (e.g., N95), along with gown, gloves, and eye protection
- HEPA filter
- * Suspected aerosol-generating procedure (on the basis of current studies)

2 Rescuer

Pediatric Basic Life Support Algorithm for Healthcare Providers—2 or More Rescuers



Pediatric Basic Life Support Algorithm for Healthcare Providers—2 or More Rescuers for Suspected or Confirmed COVID-19



Icon Legend

PPE appropriate for AGP: respirator (e.g., N95), along with gown, gloves, and eye protection

HEPA filter

* Suspected aerosol-generating procedure (on the basis of current studies)

Abbreviations: AED, automated external defibrillation; ALS, advanced life support; CPR, cardiopulmonary

Pediatric BLS for HCPs _ COVID19

Single Rescuer

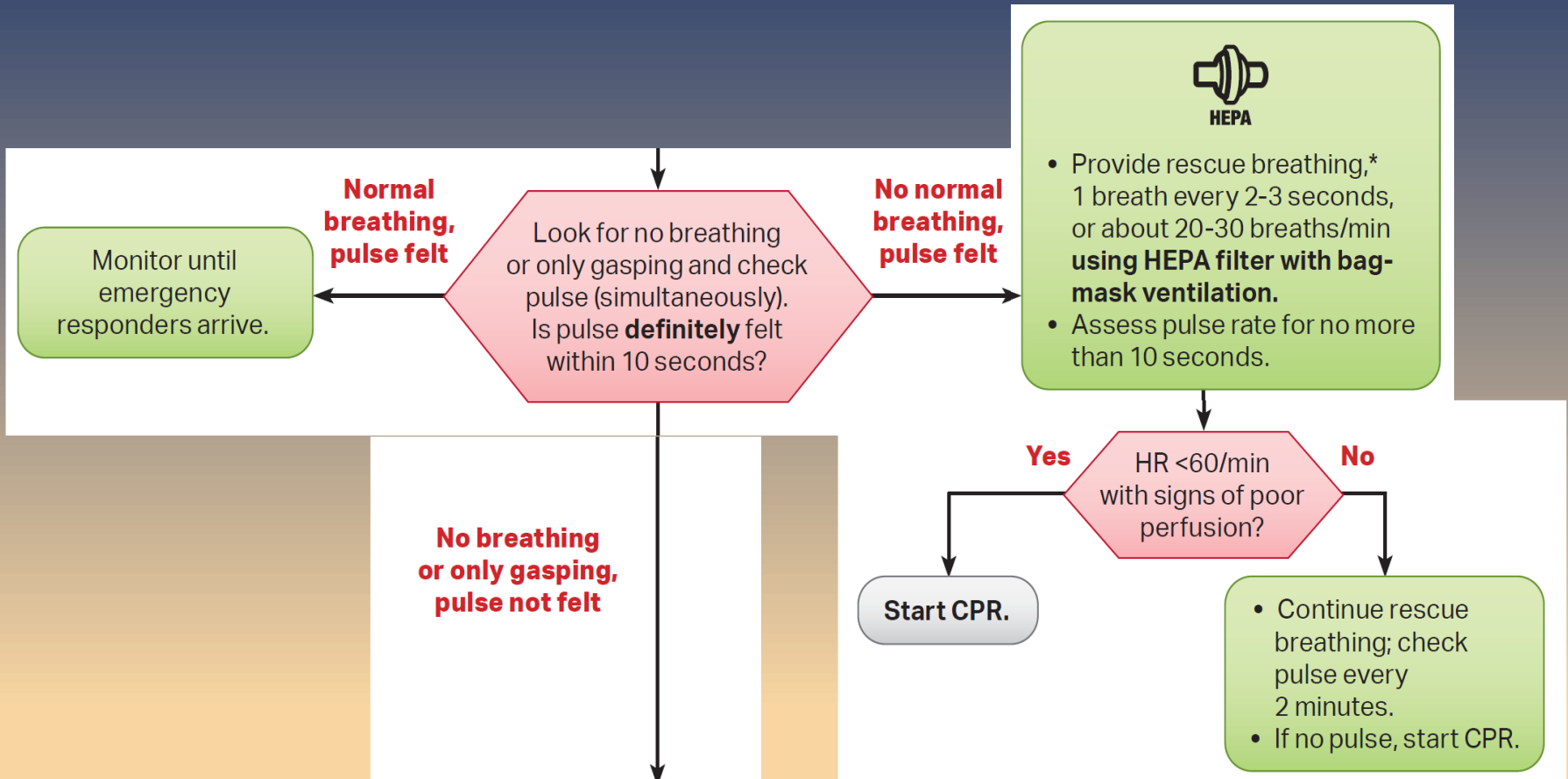


Verify scene safety.

- Check for responsiveness.
- Shout for nearby help.
- Activate the emergency response system via mobile device (if appropriate).

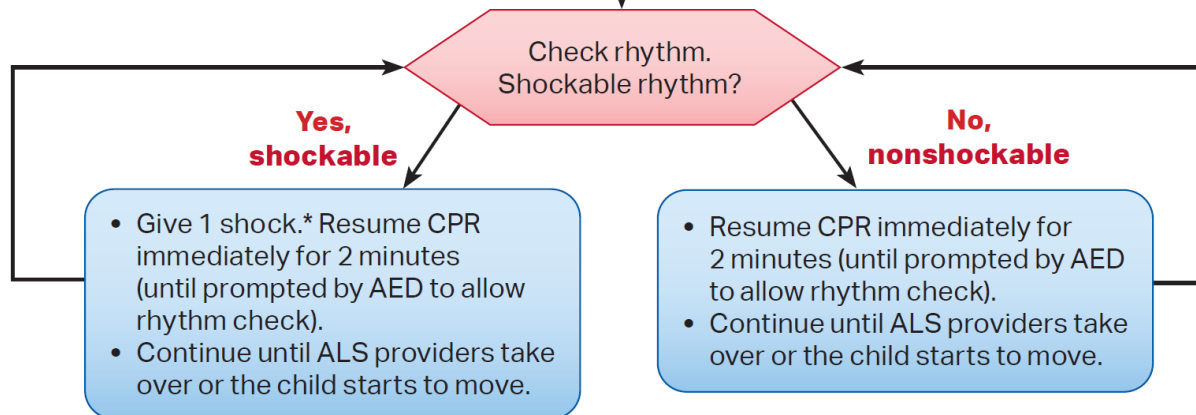
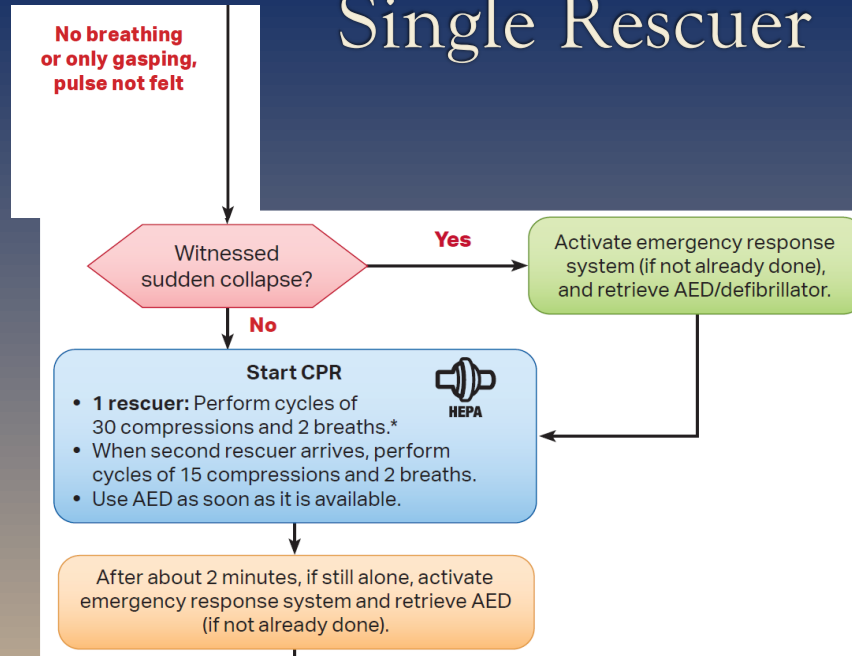
Pediatric BLS for HCPs _ COVID19

Single Rescuer



Pediatric BLS for HCPs _ COVID19

Single Rescuer



Pediatric BLS for HCPs _ COVID19

2 Rescuers

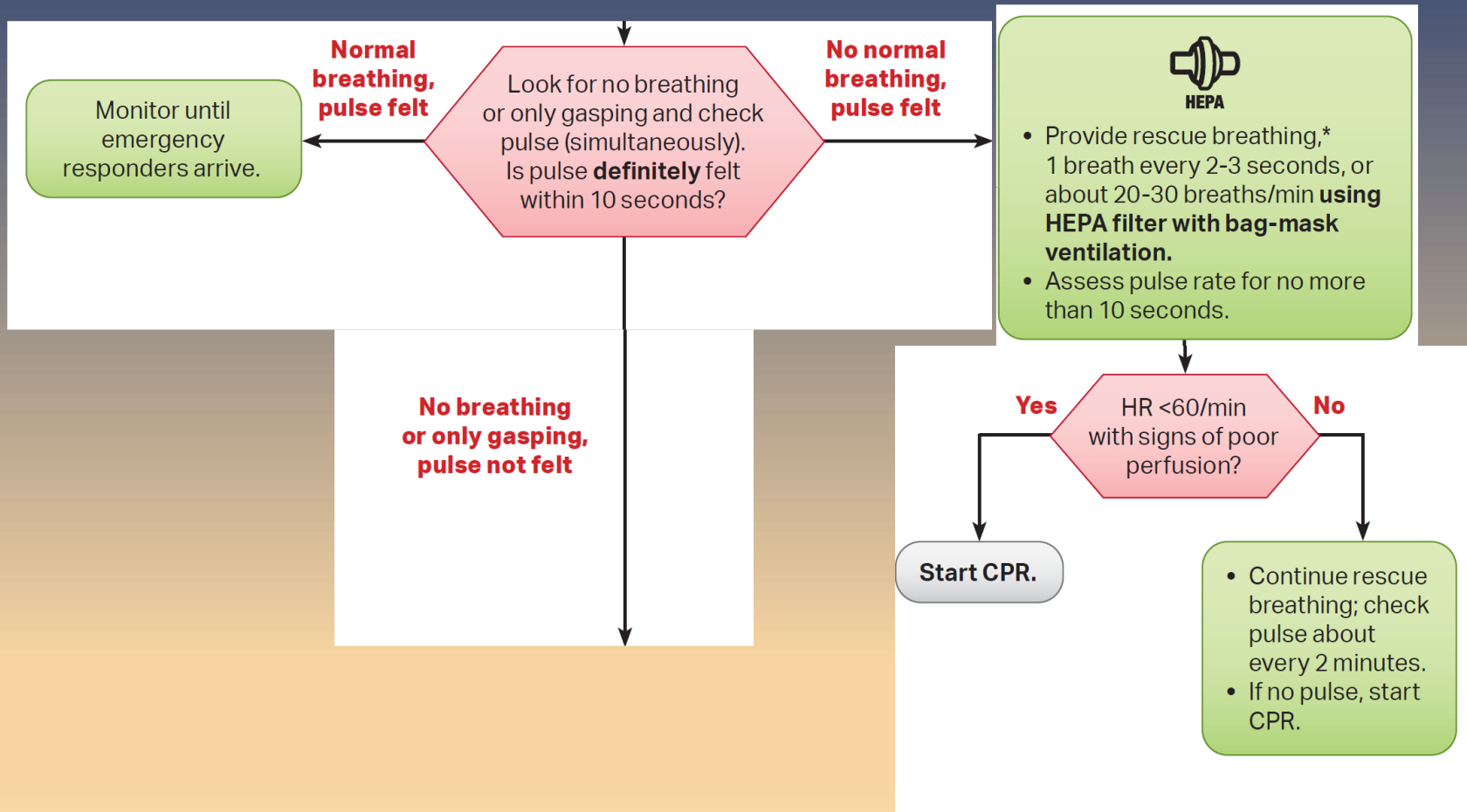


Verify scene safety.

- Check for responsiveness.
- Shout for nearby help.
- First rescuer remains with the child.
Second rescuer activates emergency response system and retrieves the AED and emergency equipment.

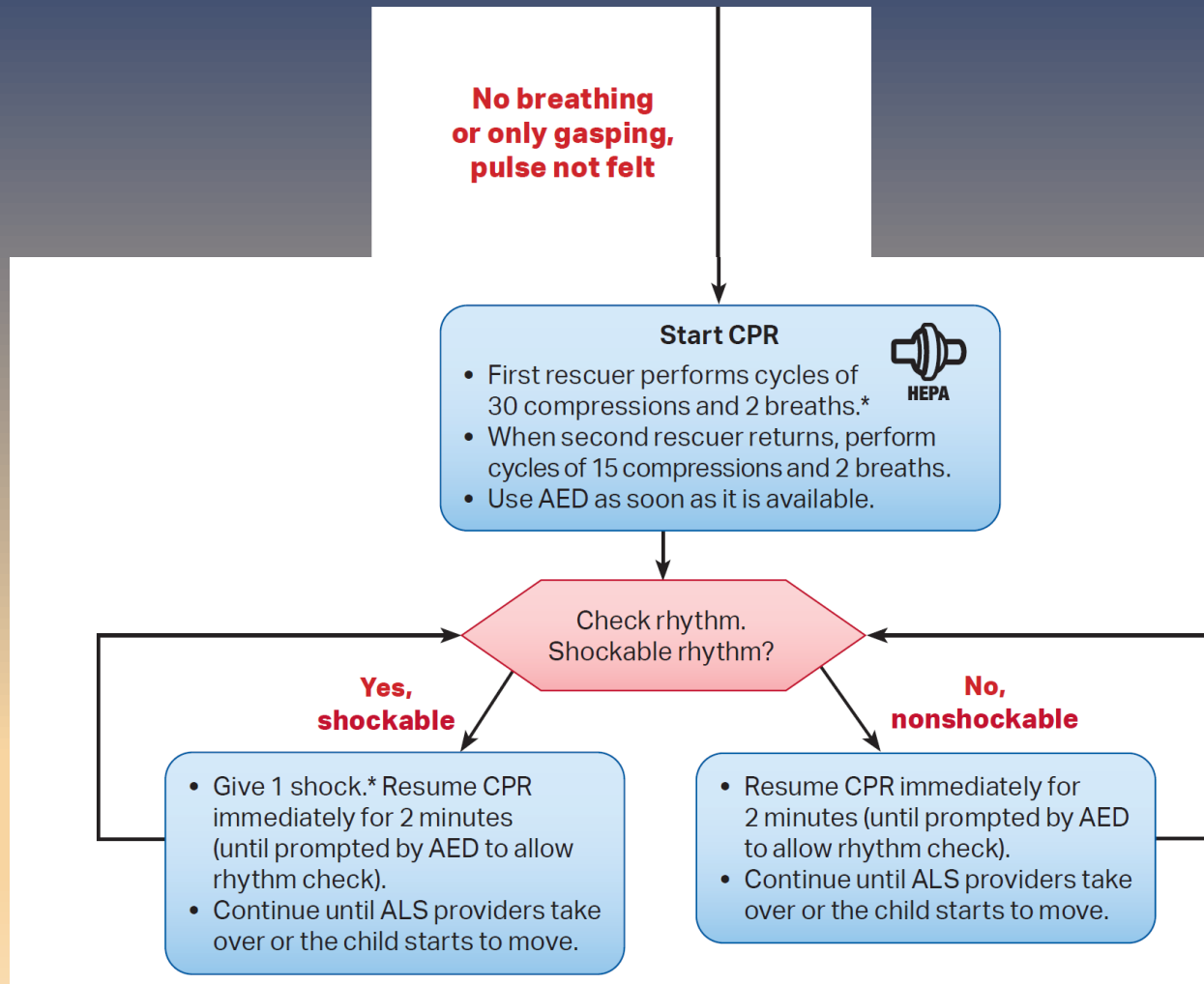
Pediatric BLS for HCPs _ COVID19

2 Rescuers



Pediatric BLS for HCPs _ COVID19

2 Rescuers



CPR at a Glance

BLS for Healthcare Professionals

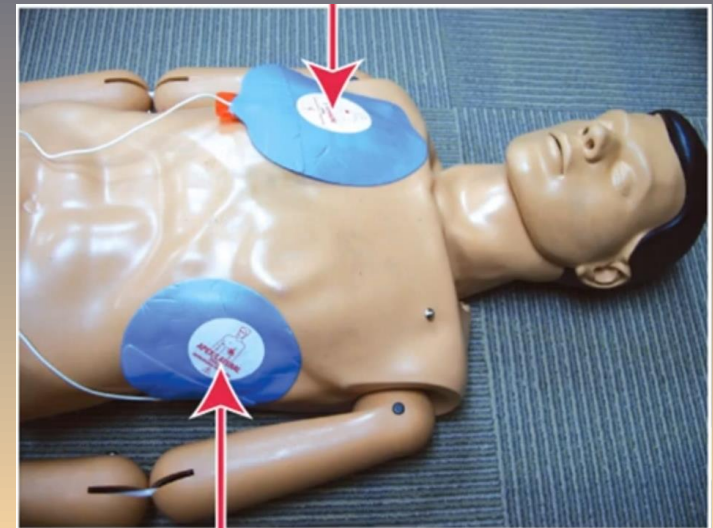
CABs of CPR

CPR	ADULT & OLDER CHILD (puberty and older)	CHILD (1 year to signs of puberty)	INFANT (up to 1 year old)
Verify Scene Safety	Do not enter an unsafe environment. Call 9-1-1		
Check victim's responsiveness	If victim is unresponsive, shout for help. Call 9-1-1 with mobile device, if available. Send someone to find an AED.		
Activate 9-1-1	If you are alone and do not have a mobile device, leave the victim to call 9-1-1 first, then look for an AED. Return to perform CPR.	If you are alone and WITNESS THE COLLAPSE Leave the victim to call 9-1-1 first, and look for an AED. Return to perform CPR.	
Determine if victim is breathing & has a pulse	Simultaneously check for breathing & pulse for no more than 10 seconds. NOTE: agonal breaths are not considered signs of breathing For children and infants, a pulse rate of less than 60 beats / minute is treated as no pulse.		
	Check carotid artery on your side of the victim's the neck.	Check brachial artery on inside of the victim's upper arm near the armpit.	
Rescue Breathing If victim has a DEFINITE detectable pulse, but is not breathing	1 breath every 5-6 seconds Check pulse every 2 minutes.	1 breath every 3-5 seconds Check pulse again every 2 minutes If pulse less than 60 beats per minute, or perfusion remains poor, add compressions	
	For suspected opioid overdose, administer naloxone, if available		
If victim has NO detectable pulse: Begin CPR Minimize interruptions	1 rescuer: 30 compressions : 2 breaths 2+ rescuers: 30 compressions : 2 breaths Use AED as soon as it arrives	1 rescuer: 30 compressions : 2 breaths 2+ rescuers: 15 compressions : 2 breaths Use the AED as soon as it arrives	
Compression rate	100 - 120 compressions per minute		
Hand placement	2 hands on lower half of breastbone	1 hand or 2 hands on lower half of breastbone	1 rescuer: 2 fingers 2+ rescuers: 2 thumbs on center of chest, just below nipple line
Compression depth	2 to 2.4 inches (5-6 cm)	1/3 the depth of the chest - about 2 inches (5 cm)	1/3 the depth of the chest - about 1.5 inches (4 cm)
Chest recoil	Allow for full chest recoil after each compression		
Minimize interruptions	Limit interruptions in chest compressions to no more than 10 seconds		
Use the AED as soon as it arrives	Turn on AED and follow instructions. Never remove the AED.		

AED

دفیبریلاسیون سریع با کمک AED

- روشن کردن دستگاه
- چسباندن پدها
- آنالیز ریتم
- دادن شوک در صورتی که دستگاه ریتم را قابل شوک اعلام می کند (پس از جدا شدن از بیمار)
- ماساژ سریع قفسه سینه به مدت 2 دقیقه پس از شوک
- آنالیز مجدد ریتم با AED
- ریتم غیر قابل شوک



Despite recent gains, less than 40% of adults receive layperson-initiated CPR, and fewer than 12% have an AED applied before EMS arrival.

IHCA



OHCA



با وجود دستاوردهای اخیر، کمتر از ۴۰٪ بزرگسالان CPR اولیه از حاضران در صحنه، و کمتر از ۱۲٪ آنها AED را قبل از رسیدن اورژانس دریافت کرده اند.

Thanks



Reza HabibiSaravi MD., PhD.
Disaster and Emergency Health Specialist
National Hospital Disaster Management Lecturer

Mobile: +98 935 598 7575

Email-personal: drhabibisaravi@hotmail.com

Email-Academic: rhabibisaravi@mazums.ac.ir

Website: www.hidae.ir

Address: Valie-Asr Blvd., Sari, Mazandaran province, I.R. Iran

Zip Code: 4815733971

